



BRUXELLES • STORAGE/PRODUCTION

STE CATHERINE - 710m² warehouse

5 300 €

Rue de Witte de Haelen 36 36 , 1000

Description du bien

SAINCTELETTTE / STE CATHERINE, 710 sq m building with warehouse/workshop and office (apartment with kitchen and bathroom). Carriage entrance with access to a 300 sq m warehouse and 300 sq m mezzanine, separate WC, fitted bar. Office: bathroom, kitchen, living room, and 2 bedrooms! Individual meters and monthly provision for property tax. Standard lease - 3 years - security deposit: 4 months - fire insurance. Available February 1st. Information & Viewings: +32 492 255 999

Informations essentielles

Surface habitable	710 m²	Année construction	1950
Nombre de salles de bain	2	Surface terrain	355 m²
Nombre de toilettes	2		

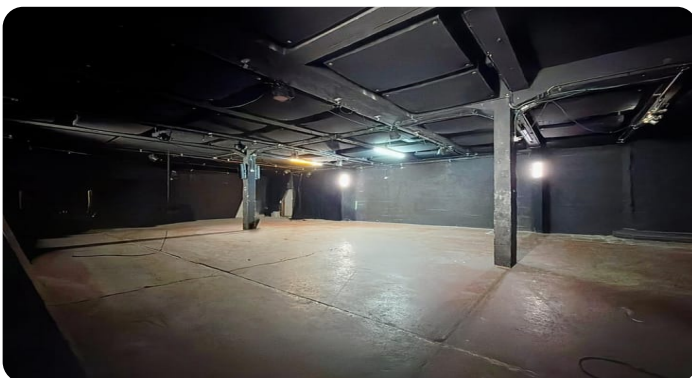
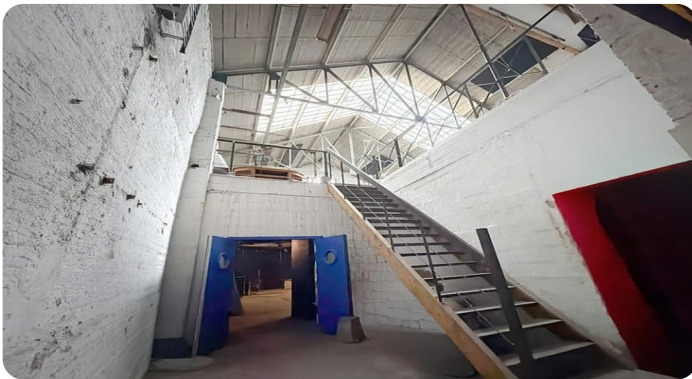
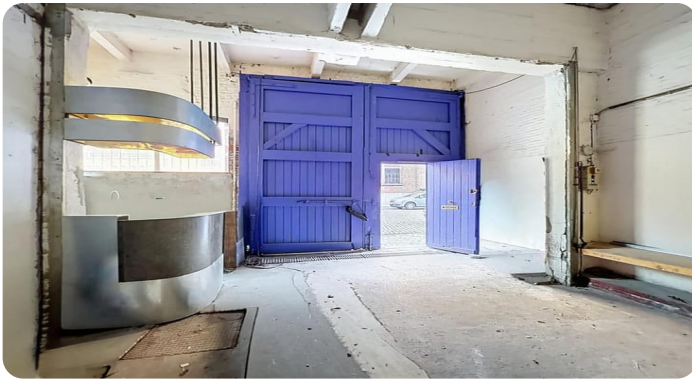
Informations supplémentaires



-
- Terrasse
 - Jardin privé
 - Ascenseur
 - Cave
 - Grenier
 - Climatisation
 - Piscine
 - Sauna
 - Jacuzzi
 - Alarme
 - Porte renforcée
 - Internet
 - TV câblée
 - Accès PMR
 - Meublé
 - Cuisine ouverte
 - Buanderie
 - Bureau
 - Espace de travail
 - Vue mer



Galerie photos



Contact

Agence : Jean Victor Immo
Adresse : Avenue Louise 231, 1050 Ixelles